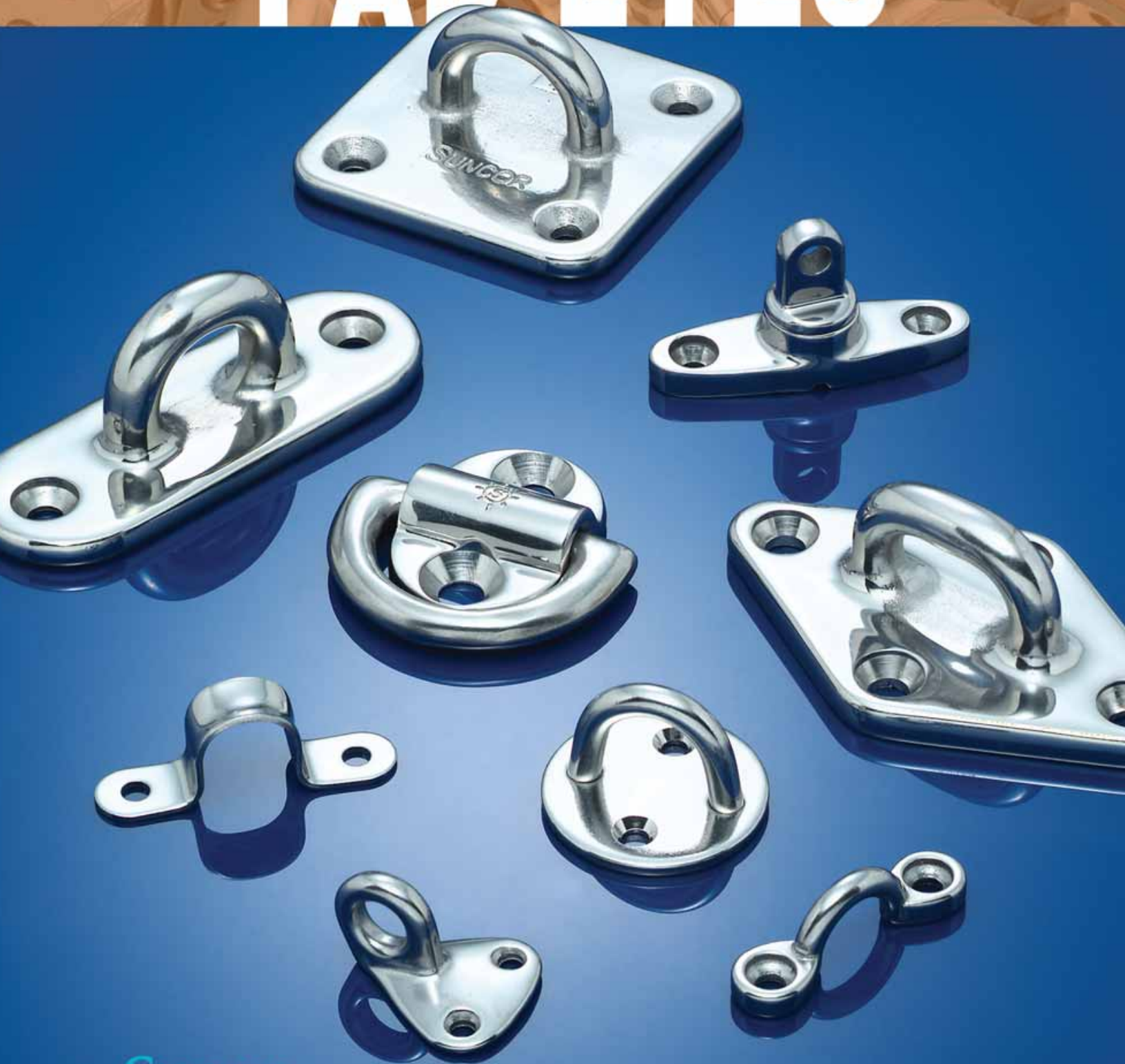


SUNCOR STAINLESS, INC.

PAD EYES



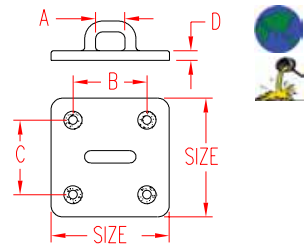
www.suncorstainless.com

85

HEAVY DUTY SQUARE PAD EYE



316 STAINLESS STEEL



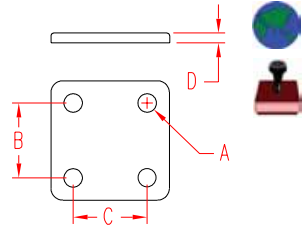
ITEM	SIZE	A	B	C	D	WLL	WT
						(lb)	(lb)
S3704-0000	3"	0.94"	2.00"	2.00"	0.25"	3,000	0.66

NOTE:
HEAVY DUTY, ONE PIECE PRECISION CASTING, WITHOUT WELDS.
FOR MAXIMUM LOAD DISTRIBUTION USE HD BACKPLATE .
USE 1/4" FASTENERS.

HD SQUARE BACKPLATE



304 STAINLESS STEEL



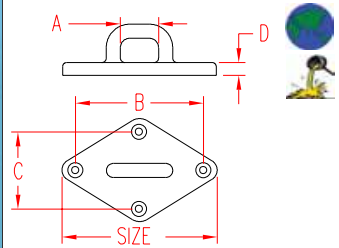
ITEM	SIZE	A	B	C	D	WLL	WT
						(lb)	(lb)
S3704-0001	3"	1/4"	2.00"	2.00"	0.10"	N/A	0.28

NOTE:
FOR USE WITH HEAVY DUTY SQUARE PAD EYE ABOVE.
USE HD BACKPLATE FOR MAXIMUM LOAD DISTRIBUTION.
DESIGNED TO ACCEPT 1/4" FASTENERS.

HEAVY DUTY DIAMOND PAD EYE



316 STAINLESS STEEL



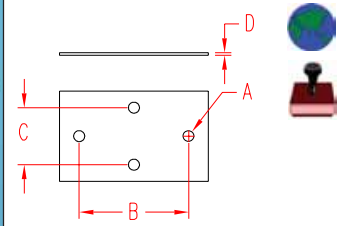
ITEM	SIZE	A	B	C	D	WLL	FAST.	WT
	(length)					(lb)		(lb)
S3702-0000	3-1/4"	0.76"	2.37"	1.23"	0.26"	2,000	1/4"	0.30
S3703-0000	4"	1.00"	3.00"	1.56"	0.28"	3,000	5/16"	0.49

NOTE:
HEAVY DUTY ONE PIECE PRECISION CASTING WITHOUT WELDS.
FOR MAXIMUM LOAD DISTRIBUTION USE HD BACKPLATE .

HD DIAMOND BACKPLATE



304 STAINLESS STEEL



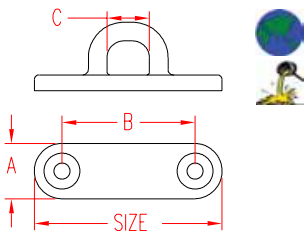
ITEM	SIZE	A	B	C	D	WLL	WT
	(length)					(lb)	(lb)
S3703-0001	4"	5/16"	3.00	1.56	0.06"	N/A	0.17

NOTE:
HEAVY DUTY DIAMOND BACKPLATE IS DESIGNED TO FIT
4" DIAMOND PAD EYE ABOVE. USE HD BACKPLATE FOR
MAXIMUM LOAD DISTRIBUTION .

HEAVY DUTY OBLONG PAD EYE



316 STAINLESS STEEL



ITEM	SIZE	A	B	C	WLL	WT
	(length)				(lb)	(lb)
S3705-X001	3"	0.85"	2.12"	0.63"	1,000	0.15
S3705-X002	3-1/2"	1.24"	2.65"	0.76"	1,500	0.29
S3705-X003	4"	1.42"	3.04"	0.88"	2,000	0.44

NOTE:
HEAVY DUTY ONE PIECE PRECISION CASTING WITHOUT WELDS.



Key:



Made in USA



Drop Forged



Precision Machined



Wire Formed



Suncor Exclusive



Import



Precision Cast



Stamped



Load Rated



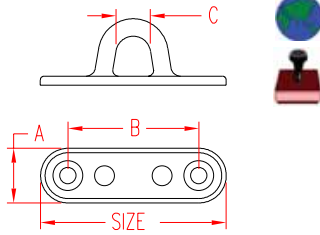
New Product

ORDERS ONLY: 800-394-2222 (USA)
877-495-5510 (CANADA)

All logos, icons, images, measurements and descriptions are the sole property of Suncor Stainless, Inc.
© 2002 Suncor Stainless, Inc.

OBLONG PAD EYE

304 STAINLESS STEEL

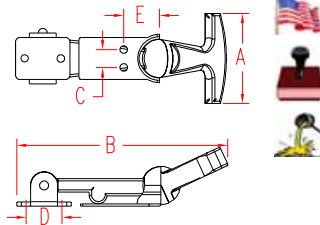


ITEM	SIZE	A	B	C	WLL	WT
	(length)				(lb)	(lb)
S3705-0005	1-3/4"	0.63"	1.50"	0.51"	450	0.04
S3705-0006	2-1/2"	0.75"	1.80"	0.63"	500	0.06
S3705-0008	3-1/4"	1.01"	2.20"	0.90"	600	0.14
S3705-0010	4"	1.28"	2.50"	1.11"	800	0.23
NOTE: STAMPED AND WELDED CONSTRUCTION.						
S3706-0005	1-3/4"					
S3706-0006	2-1/2"					
S3706-0008	3-1/4"					
S3706-0010	4"					
NOTE: STAMPED BACKPLATE FOR S3705-SERIES PAD EYES.						



FLEXIBLE DRAW LATCH

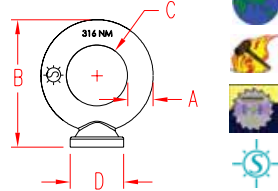
304 STAINLESS STEEL & RUBBER



ITEM	A	B	C	D	E	WT
						(lb)
S3857-0001	2.45"	5.25"	0.50"	1.00"	1.00"	0.22
NOTE: BLACK RUBBER T-HANDLE WITH STAINLESS BRACKET AND KEEPER. SHIPPED ASSEMBLED. INSTALLS WITH .1875 RIVETS OR #10 SCREWS. CAN BE WELDED. KEEPER IS INCLUDED.						

PAD EYE

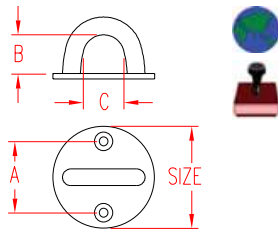
316-NM STAINLESS STEEL



ITEM	A	B	C	D	WT	
	(size)				(lb)	
S0324-0005	3/16"	1.06"	0.50"	0.38"	0.04	
S0324-0007	1/4"	1.31"	0.63"	0.56"	0.06	
S0324-0008	5/16"	1.56"	0.75"	0.63"	0.10	
S0324-0010	3/8"	2.00"	1.00"	0.86"	0.19	
S0324-0013	1/2"	2.50"	1.25"	1.00"	0.38	
S0324-0016	5/8"	3.25"	1.50"	1.38"	0.87	
S0324-0020	3/4"	3.78"	1.75"	1.80"	1.52	
NOTE: WLL IS DEPENDENT ON QUALITY OF THE WELDING AND ATTACHED STRUCTURE. PAD EYES HAVE FORGED MARKINGS OF 316-NM AND SIZE. UNDERSIDE IS MACHINED FOR PERFECT SEATING.						

ROUND PAD EYE

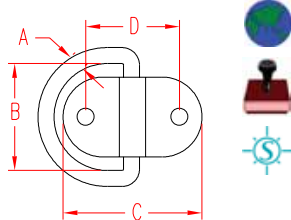
304 STAINLESS STEEL



ITEM	SIZE	A	B	C	WLL	WT
	(diameter)				(lb)	(lb)
S3707-0005	1-5/16"	0.79"	0.78"	0.58"	480	0.04
S3707-0006	1-5/8"	1.06"	1.01"	0.70"	500	0.08
S3707-0008	2"	1.17"	0.82"	0.96"	600	0.14
NOTE: STAMPED AND WELDED CONSTRUCTION.						

FOLDING PAD EYE

316 STAINLESS STEEL



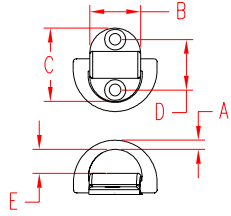
ITEM	SIZE	A	B	C	D	WLL	WT
						(lb)	(lb)
S3711-0003	1/8"	0.13"	0.86"	0.83"	N/A	50	0.02
S3711-0007	1/4"	0.23"	1.52"	2.00"	1.35"	210	0.13
S3711-0008	5/16"	0.31"	1.72"	2.50"	1.48"	400	0.24
NOTE: PART # S3711-0003 (SHOWN AT RIGHT) HAS A ONE PIECE HOLDING BODY. HOWEVER, THE LARGER SIZES HAVE A "D" RING WHICH IS SET BETWEEN A TWO PIECE HOLDING BODY, ENSURING PERFECT MOVEMENT ON ANY SURFACE.							



HEAVY DUTY FOLDING PAD EYE



316 STAINLESS STEEL



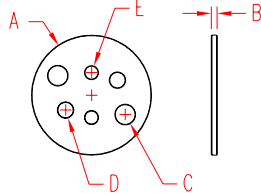
ITEM	A	B	C	D	E	WLL	WT
	(size)						(lb)
S3712-0001	1/4"	1.06"	1.53"	1.06"	0.50"	1,200	0.13
S3712-0002	5/16"	1.38"	1.94"	1.25"	0.69"	2,000	0.25
S3712-0003	3/8"	1.75"	2.53"	1.63"	0.84"	4,000	0.60

NOTE:
"D" RING IS FORGED 316 STAINLESS AND HOLDING PAD BODY IS PRECISION CAST 316.

UNIVERSAL BACKPLATE



316 STAINLESS STEEL



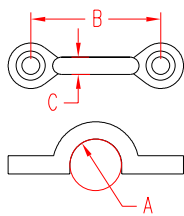
ITEM	A	B	C	D	E	WT
						(lb)
S3712-0005	2.50"	0.12"	3/8"	5/16"	1/4"	0.14

NOTE:
HD UNIVERSAL BACKPLATE IS DESIGNED FOR USE WITH ANY OF THE THREE FOLDING PAD EYES LISTED ABOVE.

PAD EYE



316 STAINLESS STEEL



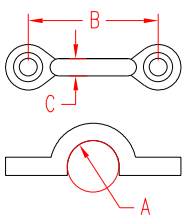
ITEM	SIZE	A	B	C	WLL	WT
					(lb)	(lb)
		(max. diameter)				
S3719-0004	5/32"	0.40"	1.25"	0.15"	300	0.01
S3719-0005	3/16"	0.50"	1.57"	0.19"	400	0.02
S3719-0006	1/4"	0.58"	1.75"	0.23"	500	0.03
S3719-0008	5/16"	0.47"	1.95"	0.31"	600	0.06

NOTE:
ROUND BAR PREVENTS CHAFE OF ROPE.

HEAVY DUTY PAD EYE



316 STAINLESS STEEL



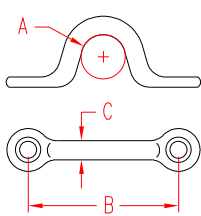
ITEM	SIZE	A	B	C	WLL	WT
					(lb)	(lb)
		(max. diameter)				
S3719-1005	5/8"	0.40"	1.40"	0.19"	350	0.03

NOTE:
ITEM IS CAST. ROUND BAR PREVENTS CHAFE OF ROPE.

PAD EYE



304 STAINLESS STEEL



ITEM	SIZE	A	B	C	WLL	WT
					(lb)	(lb)
		(max. diameter)				
S3710-0010	3/8"	0.42"	1.10"	0.18"	220	0.01
S3710-0015	1/2"	0.52"	1.40"	0.25"	230	0.02
S3710-0020	3/4"	0.78"	1.70"	0.29"	350	0.03
S3710-0028	15/16"	0.93"	2.50"	0.25"	250	0.03
S3710-0032	1-1/8"	1.12"	2.62"	0.29"	400	0.05

NOTE:
SIZE IS THE MAXIMUM INSIDE DIAMETER.



Key:



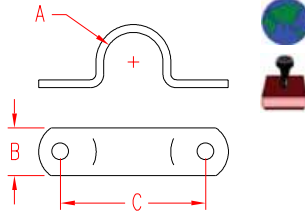
ORDERS ONLY: 800-394-2222 (USA)
877-495-5510 (CANADA)

All logos, icons, images, measurements and descriptions are the sole property of Suncor Stainless, Inc.
© 2002 Suncor Stainless, Inc.

2 HOLE EYE STRAP



304 STAINLESS STEEL



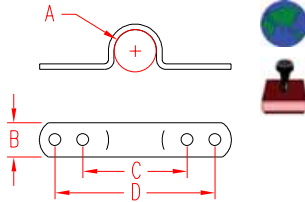
ITEM	SIZE	A	B	C	WLL	WT
					(lb)	(lb)
S3708-0010	3/8"	0.32"	0.43"	1.15"	50	0.01
S3708-0013	1/2"	0.50"	0.28"	1.27"	75	0.01
S3708-0016	5/8"	0.65"	0.50"	1.55"	100	0.02

NOTE:
SIZE IS THE MAXIMUM INSIDE DIAMETER.

4 HOLE EYE STRAP



304 STAINLESS STEEL



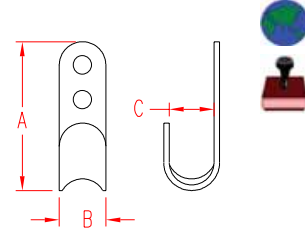
ITEM	SIZE	A	B	C	D	WLL	WT
						(lb)	(lb)
S3709-0010	3/8"	0.33"	0.43"	1.15"	2.10"	75	.02
S3709-0013	1/2"	0.44"	0.43"	1.30"	2.24"	75	.02
S3709-0016	5/8"	0.55"	0.43"	1.40"	2.35"	75	.02

NOTE:
ROUNDED SADDLE PREVENTS CHAFE OF ROPE ON EDGES.
SIZE IS THE MAXIMUM INSIDE DIAMETER.

FLAT HOOK



316 STAINLESS STEEL



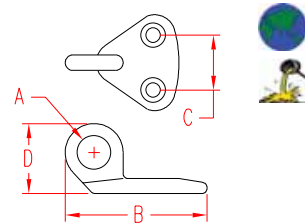
ITEM	SIZE	A	B	C	WT
					(lb)
S3715-0000	5/16"	1.62"	0.50"	0.45"	0.02

NOTE:
USE 2 #10 FASTENERS. ROUNDED SADDLE PREVENTS CHAFE OF ROPE ON EDGES.

ANCHOR EYE



316 STAINLESS STEEL



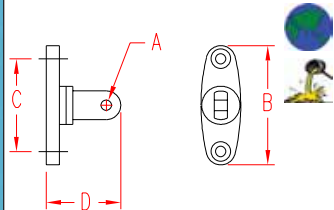
ITEM	SIZE	A	B	C	D	WT
						(lb)
S3701-0001	#1	0.40"	1.34"	0.70"	0.85"	0.05

NOTE:
USE 2 #8 FASTENERS. WORKS WITH MOST WEBBING CLIPS, SUCH AS S0221-SERIES, S0220-0025, S0211-0025 AND "S" HOOKS.

ANCHOR EYE SWIVEL



316 STAINLESS STEEL

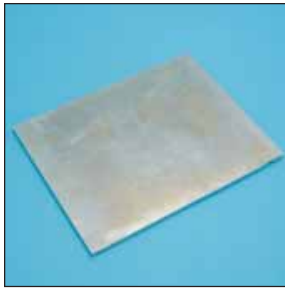


ITEM	A	B	C	D	WT
					(lb)
S3701-0002	0.26"	2.52"	1.82"	1.28"	0.16

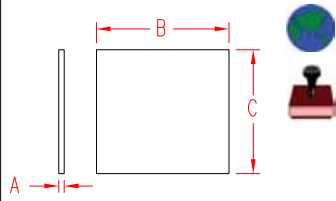
NOTE:
THIS PART IS DESIGNED TO SWIVEL 360 DEGREES AND ALLOW 180 DEGREE ALIGNMENT OF ATTACHMENT. USE 2 #8 FASTENERS. WORKS WITH MOST WEBBING CLIPS SUCH AS S0221-SERIES, S0220-0025, S0211-0025 AND "S" HOOKS.



BACKING PLATES



304 STAINLESS STEEL



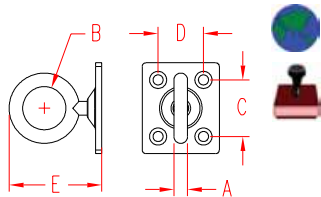
ITEM	A	B	C
S3716-1015	3/32"	4.00"	6.00"
S3716-1520	3/32"	6.00"	8.00"
S3716-2030	3/32"	8.00"	12.00"

NOTE:
USED FOR BACKING OF CLEATS, CHOCKS, ETC.
UNDRILLED, CAN BE CUSTOMIZED AT ADDITIONAL CHARGE.

SWIVEL PAD EYE



304 STAINLESS STEEL



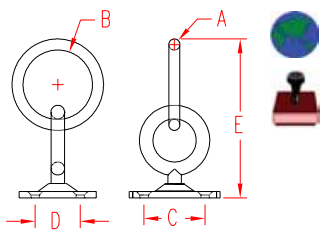
ITEM	A	B	C	D	E	WLL	WT
S3714-0005	3/16"	0.61"	0.89"	0.72"	1.29"	200	(lb) 0.08
S3714-0006	1/4"	0.75"	1.02"	0.78"	1.57"	300	0.12
S3714-0008	5/16"	0.76"	1.38"	0.99"	1.85"	480	0.20

NOTE:
RING ROTATES 360 DEGREES. MOUNTING HOLES ARE 5/32" EXCEPT FOR S3714-0008, WHICH HAS 3/16" MOUNTING HOLES. SCREWS NOT INCLUDED.

SWIVEL PAD EYE W/RING



304 STAINLESS STEEL



ITEM	A	B	C	D	E	WLL	WT
S3714-R005	3/16"	1.21"	0.89"	0.72"	2.50"	200	(lb) 0.10
S3714-R006	1/4"	1.61"	1.02"	0.78"	3.16"	300	0.18
S3714-R008	5/16"	1.98"	1.38"	0.99"	3.75"	480	0.32

NOTE:
RING WITH LARGER RING ROTATES 360 DEGREES. MOUNTING HOLES ARE 5/32" EXCEPT FOR S3714-R008, WHICH HAS 3/16" MOUNTING HOLES. SCREWS NOT INCLUDED.



Stainless Steel Chart

Do you know your stainless steel?

GRADE	CORROSION RESISTANCE	STRENGTH	LIFE SPAN	MAINTENANCE
302 SS	poor	best	fair	fair
304 SS	good	best	good	fair
316 SS	best	good	excellent	excellent
17-4 PH	fair	excellent	good	fair

General Descriptions:

Type 302 - A slightly higher carbon version of type 304, most commonly found in strip and wire forms. More corrosion resistant than 301 due to higher nickel content. Non-magnetic in annealed form, slightly magnetic when cold formed.

Type 304 - One of the most widely used and oldest of the stainless steels. This was originally called 18-8 which stood for its chromium and nickel content. It possesses an excellent combination of strength, corrosion resistance and fabricability.

Type 316 - This austenitic stainless steel has an added molybdenum content to increase its resistance to corrosion, when compared to other 300 series alloys. It will resist scaling at temperatures up to 1600 F. 316 is used in the marine industry for its resistance to corrosion.

Type 17-4PH - General purpose, precipitation-hardening stainless steel, Low temperature (1000 deg F approx) "age hardening" produces superior hardness/strength without distortion or scaling.



ORDERS ONLY: 800-394-2222 (USA)
877-495-5510 (CANADA)

Key:



All logos, icons, images, measurements and descriptions are the sole property of Suncor Stainless, Inc. © 2002 Suncor Stainless, Inc.